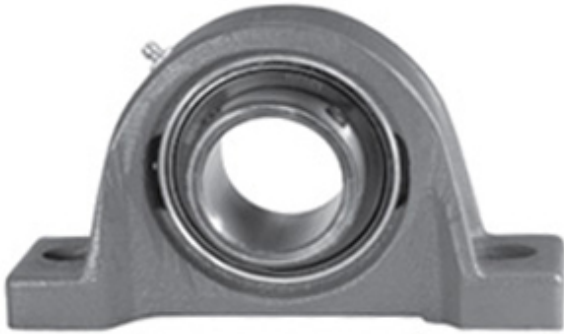




NTN BEARING MFG.CORP.

1.5 Inch | 38.1 Millimeter x 1.656 Inch | 42.06 Millimeter x 1.938 Inch | 49.225 Millimeter LINK BELT PL3S224E Pillow Block Bearings



PL3S224E Bearing 2D drawings and 3D CAD models

Bearing No. PL3S224E

| | |
|---------------------------|--|
| Category | Pillow Block Bearings |
| Inventory | 12.0 |
| Manufacturer Name | REXNORD |
| Minimum Buy Quantity | N/A |
| Weight | 1.91 |
| EAN | 0662327421403 |
| Product Group | M06110 |
| Number of Mounting Holes | 2 |
| Mounting Method | Set Screw |
| Housing Style | 2 Bolt Pillow Block |
| Rolling Element | Ball Bearing |
| Housing Material | Cast Iron |
| Expansion / Non-expansion | Non-expansion |
| Mounting Bolts | 1/2 Inch |
| Relubricatable | Yes |
| Insert Part Number | SG224EL |
| Seals | Single Lip Contact |
| Housing Configuration | 1 Piece Solid |
| Inch - Metric | Inch |
| Other Features | Single Row Intermediate Duty Low Base Extended Inner Race |
| Long Description | 2 Bolt Pillow Block; 1-1/2" Bore; 1-15/16" Base to Center Height; Set Screw Mount; Ball Bearing; |



NTN BEARING MFG.CORP.

| | |
|----------------------------------|---|
| | Relubricatable; Cast Iron; Single Lip Contact; Non- expansion |
| Category | Pillow Block |
| UNSPSC | 31171511 |
| Harmonized Tariff Code | 8483.20.40.40 |
| Noun | Bearing |
| Keyword String | Pillow Block |
| Manufacturer URL | http://www.rexnord.com |
| Manufacturer Item Number | PL3S224E |
| Manufacturer Internal Number | 5842140 |
| Weight / LBS | 4.2 |
| B | 1.938 Inch 49.225 Millimeter |
| Bolt Spacing Maximum | 0 Inch 0Millimeter |
| D | 1.656 Inch 42.06 Millimeter |
| Nominal Bolt Center to Center | 5.4 Inch 136 Millimeter |
| d | 1.5 Inch 38.1 Millimeter |
| Actual Bolt Center to Center | 5.4 Inch 136Millimeter |
| Bolt Spacing Minimum | 0 Inch 0Millimeter |